



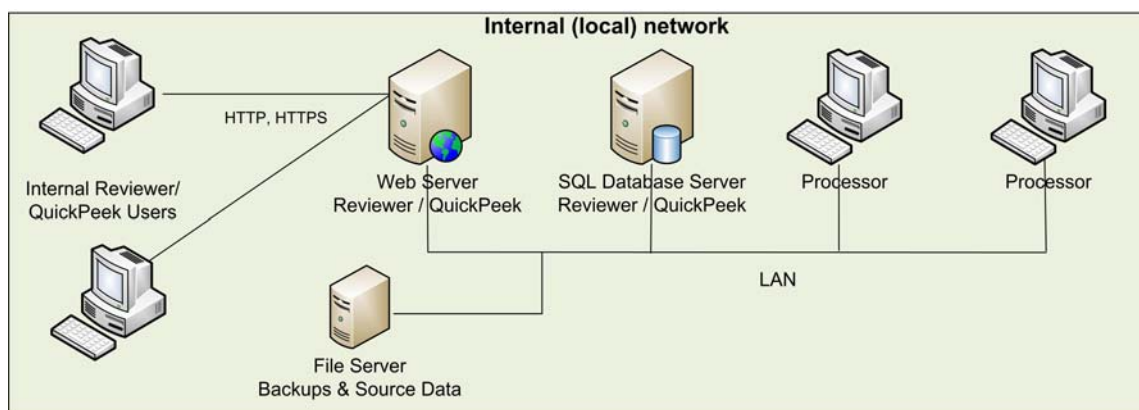
Server Architecture Configuration Options

For Internal and External Hosting of eDiscovery Tools Products

This document presents a summary of the server architecture configuration options for eDiscovery Tools QuickPeek and Reviewer products. It should be read alongside eDiscovery Tools System Requirements documentation also available on-line at <http://www.ediscoverytools.com/system.html>.

Option 1 : Internal Hosting for Intranet users only – no external Internet users

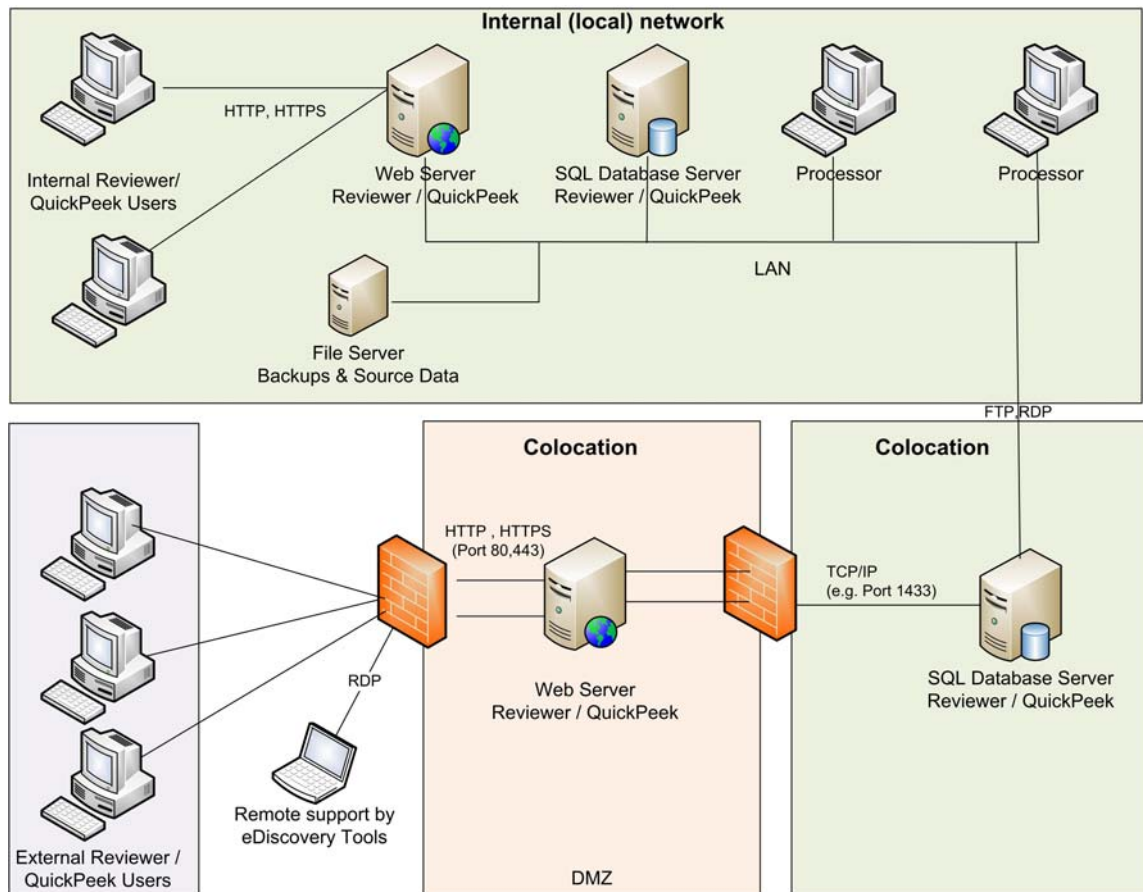
Where access to Reviewer and/or QuickPeek is only required for internal users via a corporate intranet and external clients do not require access via the Internet, the following configuration is recommended.



The Web Server and Database Servers could be combined on one machine if necessary.

Option 2 : External Hosting– to service external clients via the Internet

Where, external clients require on-line access to Reviewer and/or QuickPeek via the Internet (in addition to the internal facility for internal intranet users), a second WebServer and DB Server could be hosted on a Co-location facility with a DMZ and a Virtual Private Network as shown in the diagram below.



Processor workstations should always reside on the Local Area Network and the resulting data is loaded onto the remote co-located servers using:-

- Direct network access by protocols such as FTP and RDP or
- Configuring the QuickPeek and Reviewer loaders to load data over the network ; or
- Transfer of physical portable storage via DVD, USB, Hard Drives etc

A possible variation to this would be to place both the Web Server and the Database Server on the same machine within the DMZ.

The following secure SSL Portal solution is highly recommended <http://www.watchguard.com/>